

eMeet Note N1 USB Driver Installation Guide

Version	Author	Date	Content
1.0	Donglian	2019-11-18	Create

1、Download files

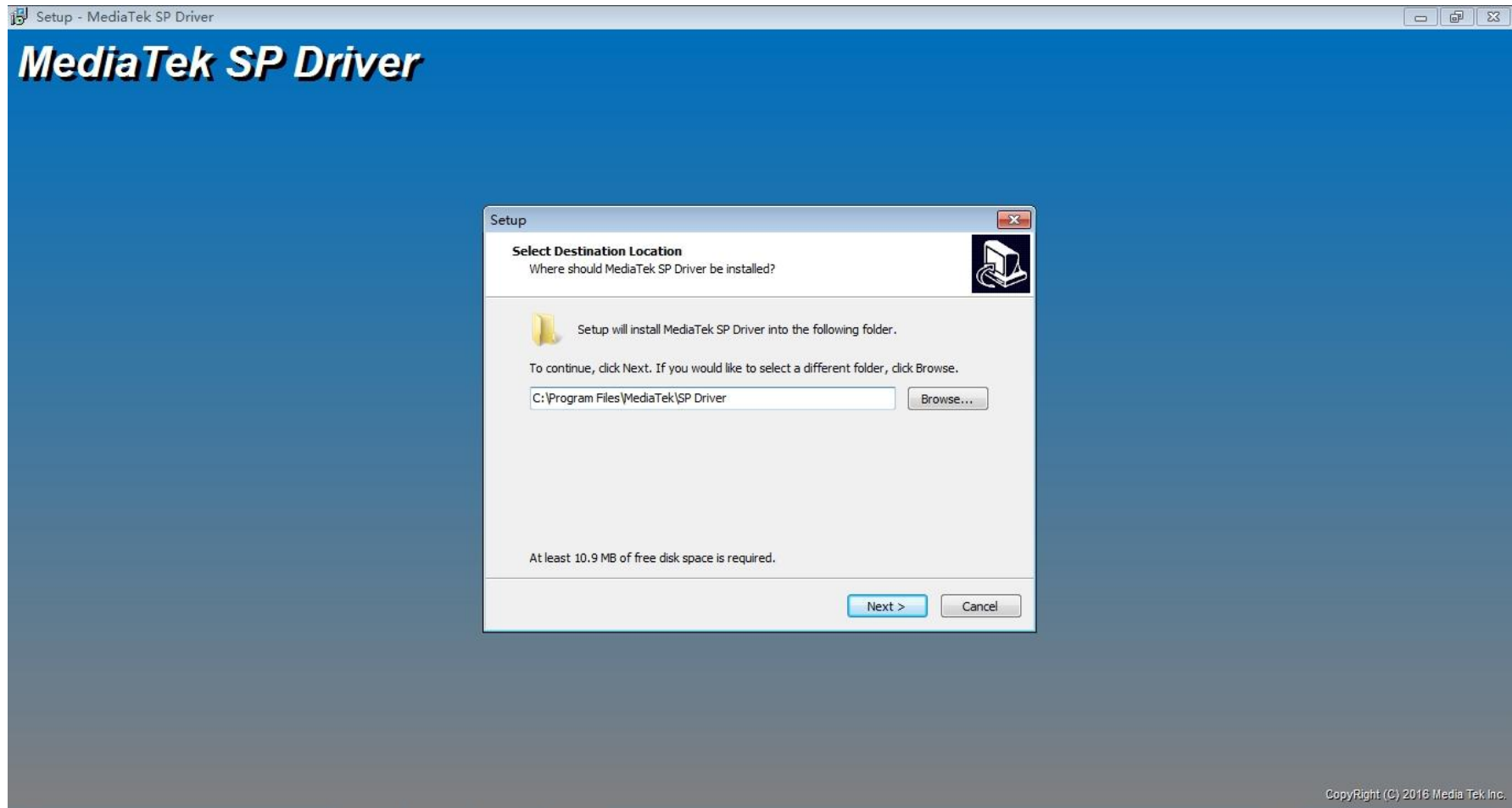
Open the link: http://www.emeet.ai/note/USB_Driver_Auto_Installer_v5.1632.00.rar , download the files.

2、Unzip files

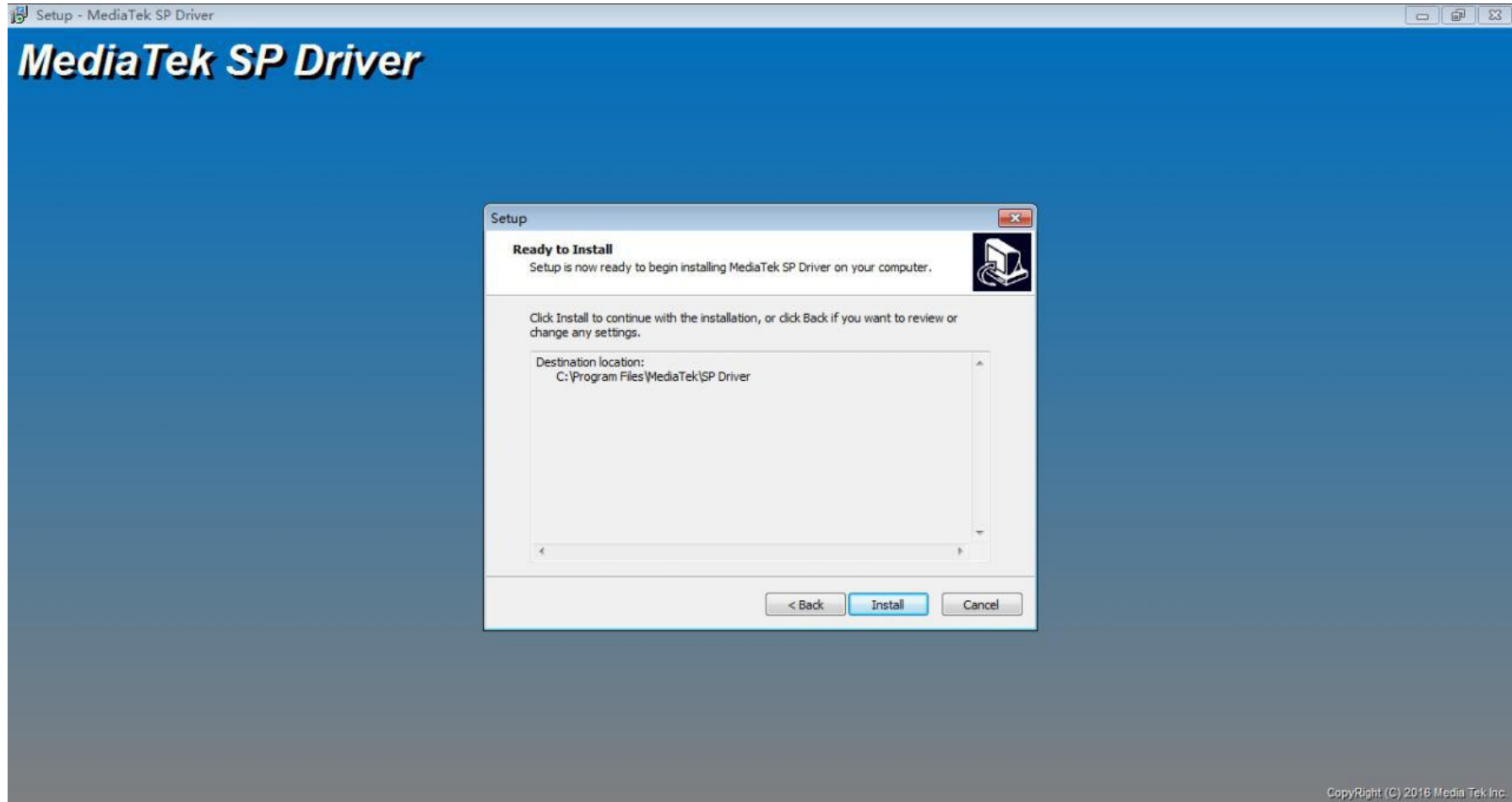
3、Enter the unzipped folder, select the driverinstall.exe , right-click and select “open”.

4、Select Destination Location

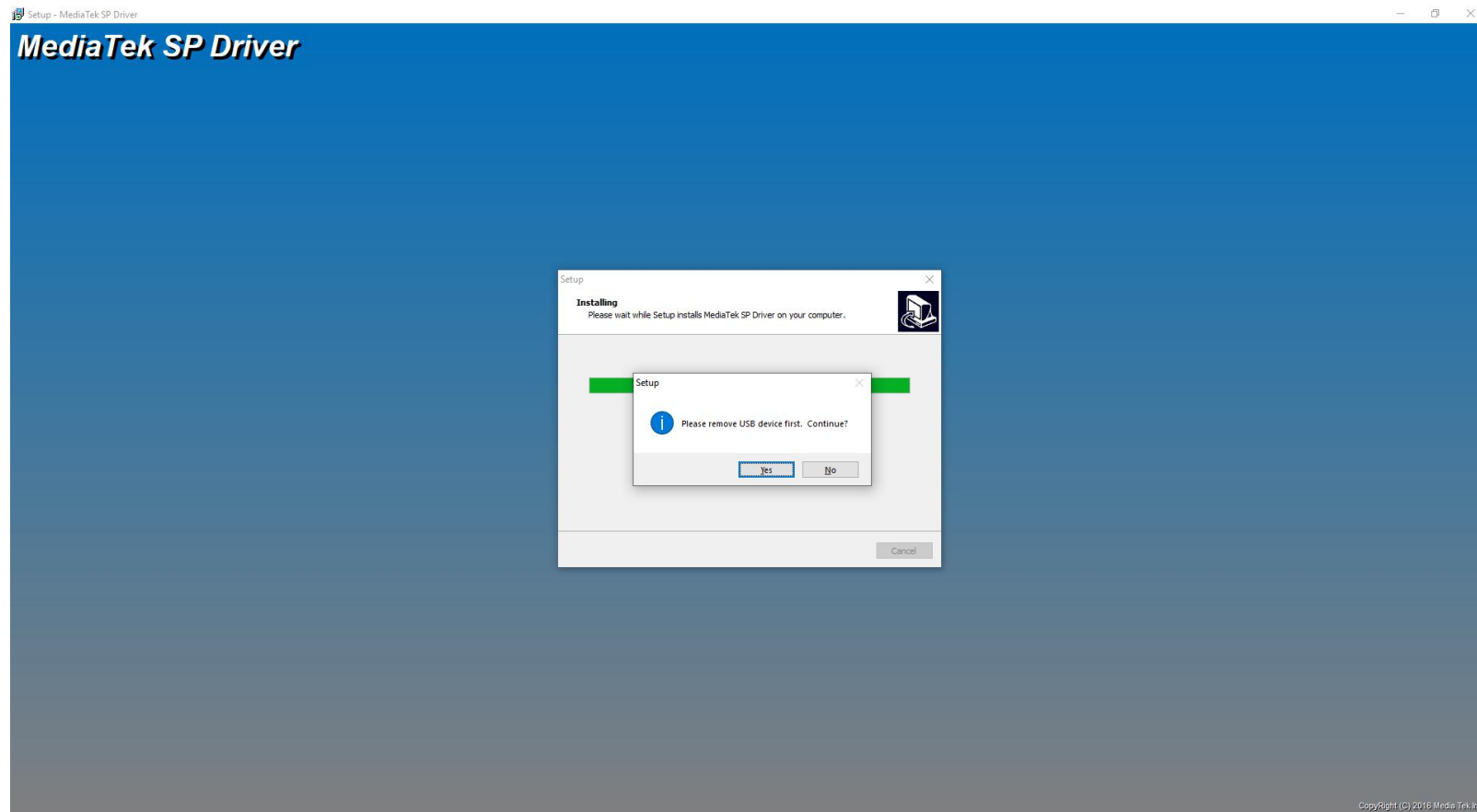
Select the installation location of the driver and click “next”. The default installation location is C:\Program Files\MediaTek\SP Driver.



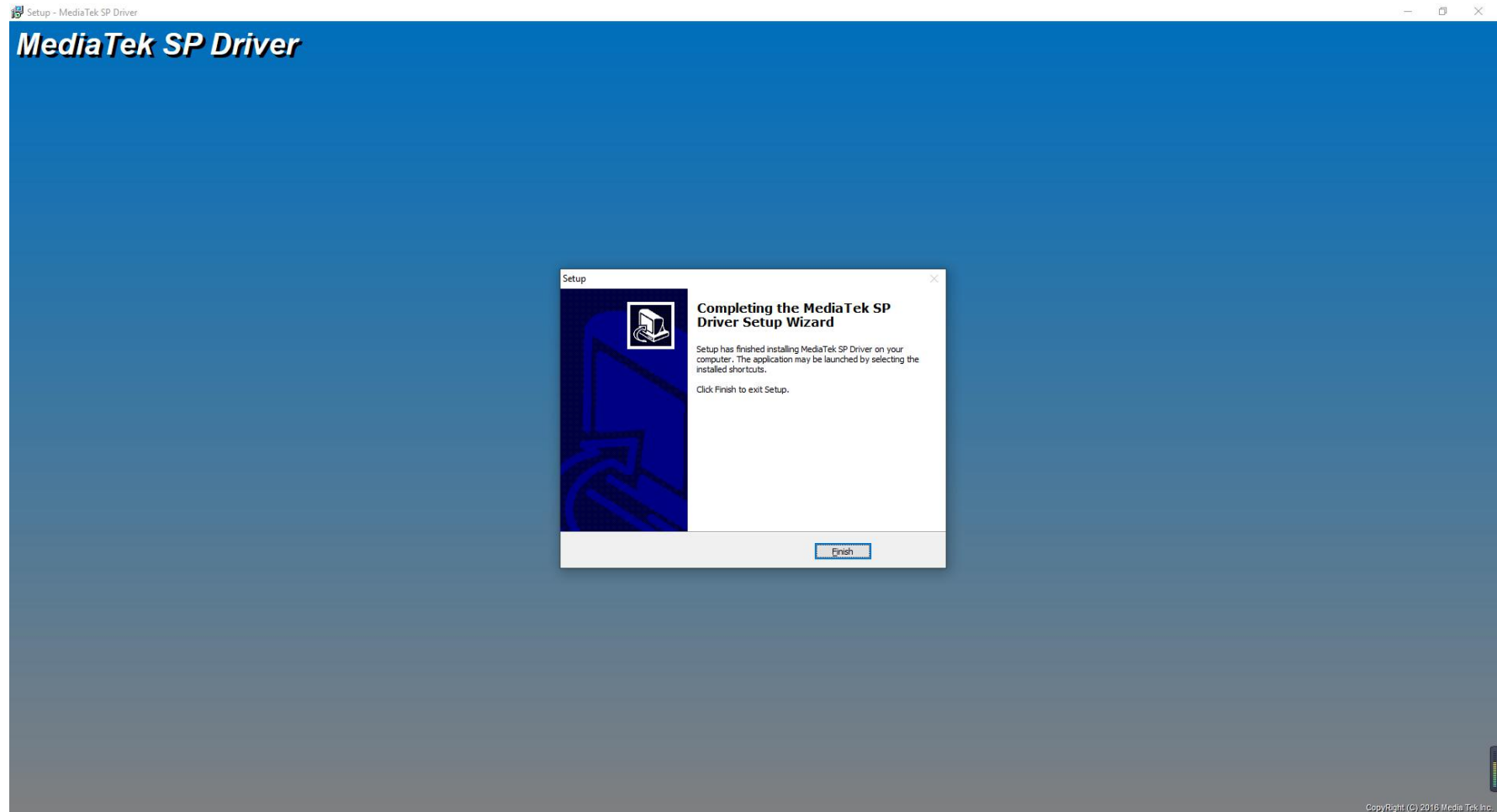
5、 Go to the Ready to Install page and select “Install”



6、 When installing, pop up the dialog box, and select Yes



7、Installation complete, click Finish



8、Move the mouse to the computer start button ,right-click, and select device manager

9、Click sound,video and game controllers,display eMeet Note N1;Click Universal Serial Bus controllers , display USB Composite Device、 USB Mass Storage Device.

