



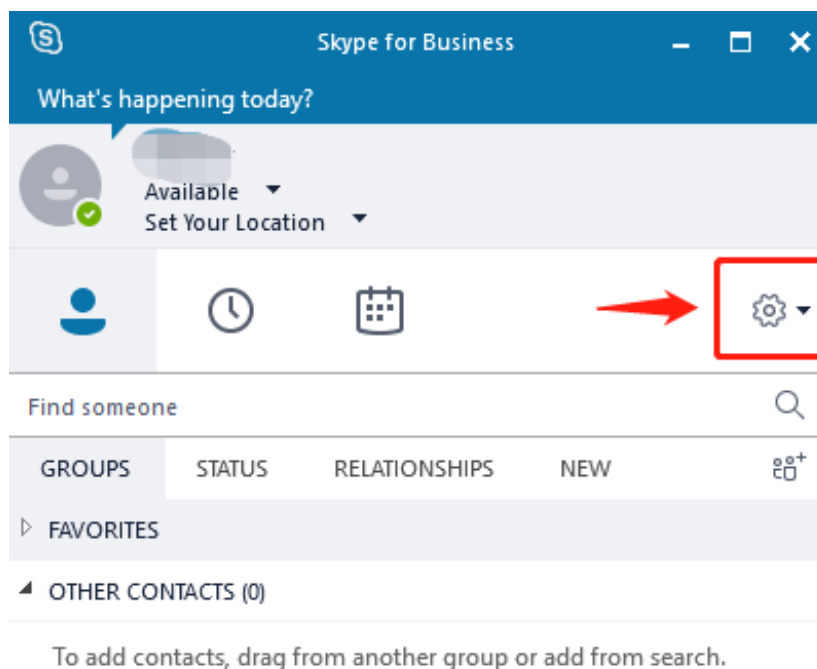
Call Settings

Directory

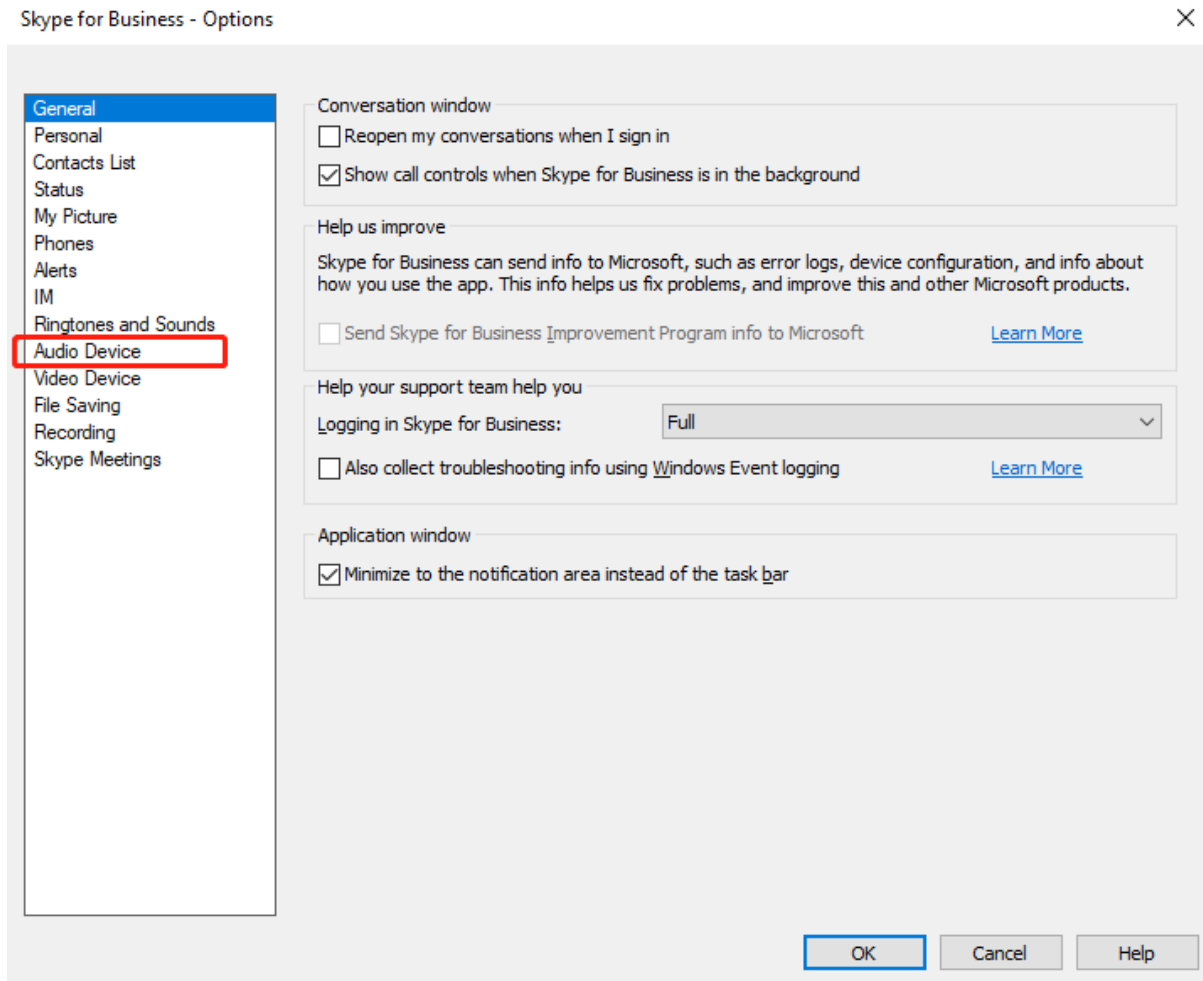
1、Skype for business Audio Settings	1
2、Zoom Audio Settings	4
3、Skype Audio Settings	8
4、Google Hangouts Audio Settings	12

1、Skype for business Audio Settings

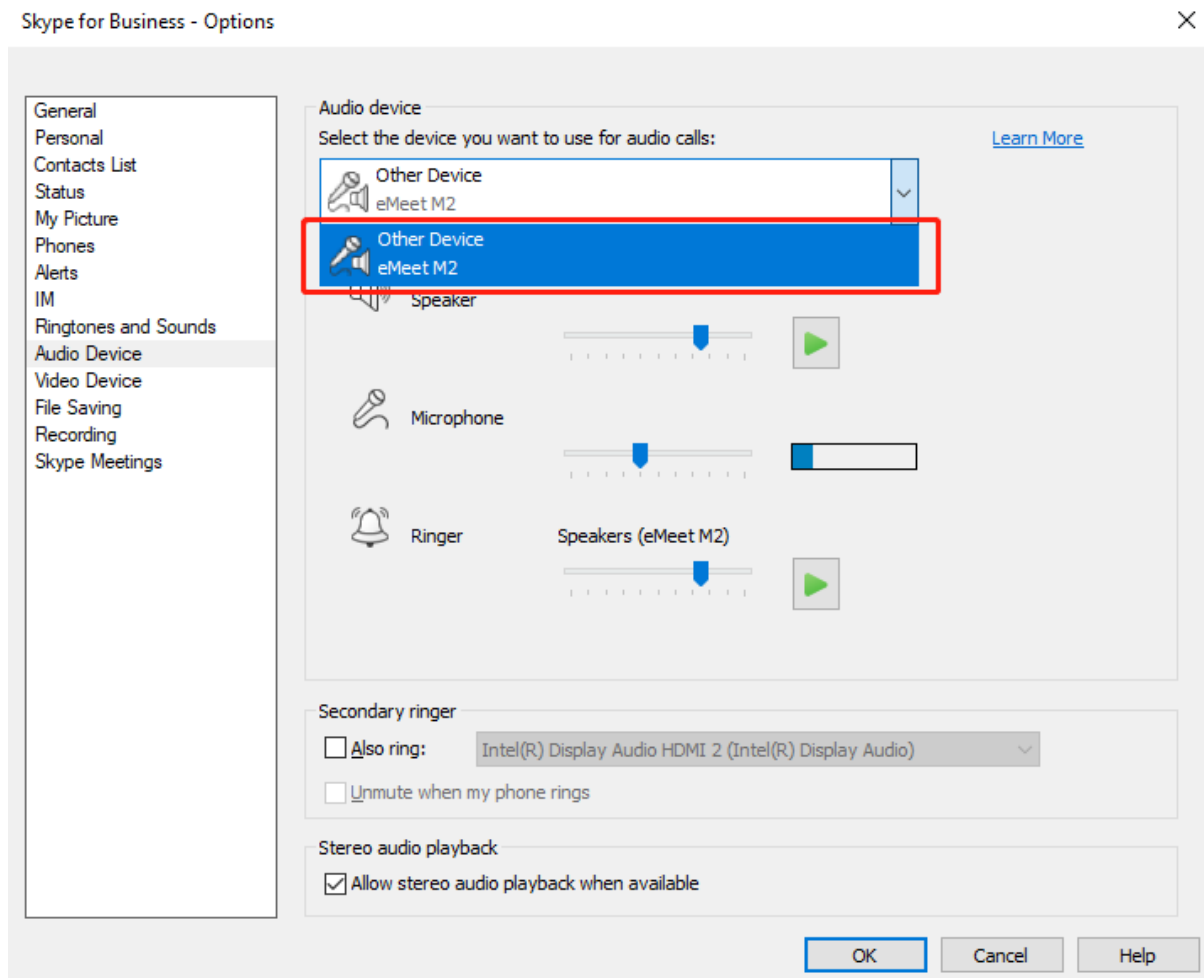
Step1 Click the settings icon;



Step 2: Select the "Audio Device" option;

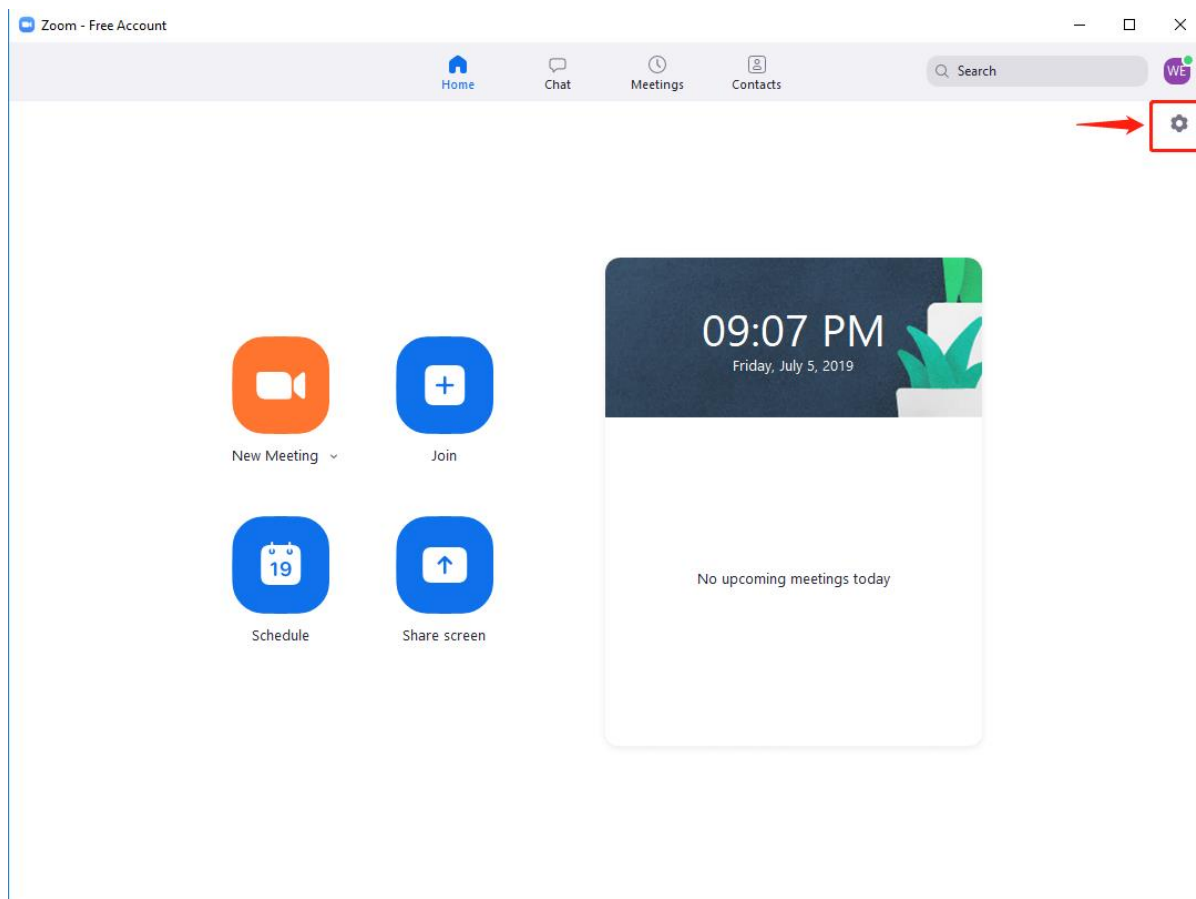


Step 3: Set the microphone and speaker to “eMeet M2” and click “OK”.

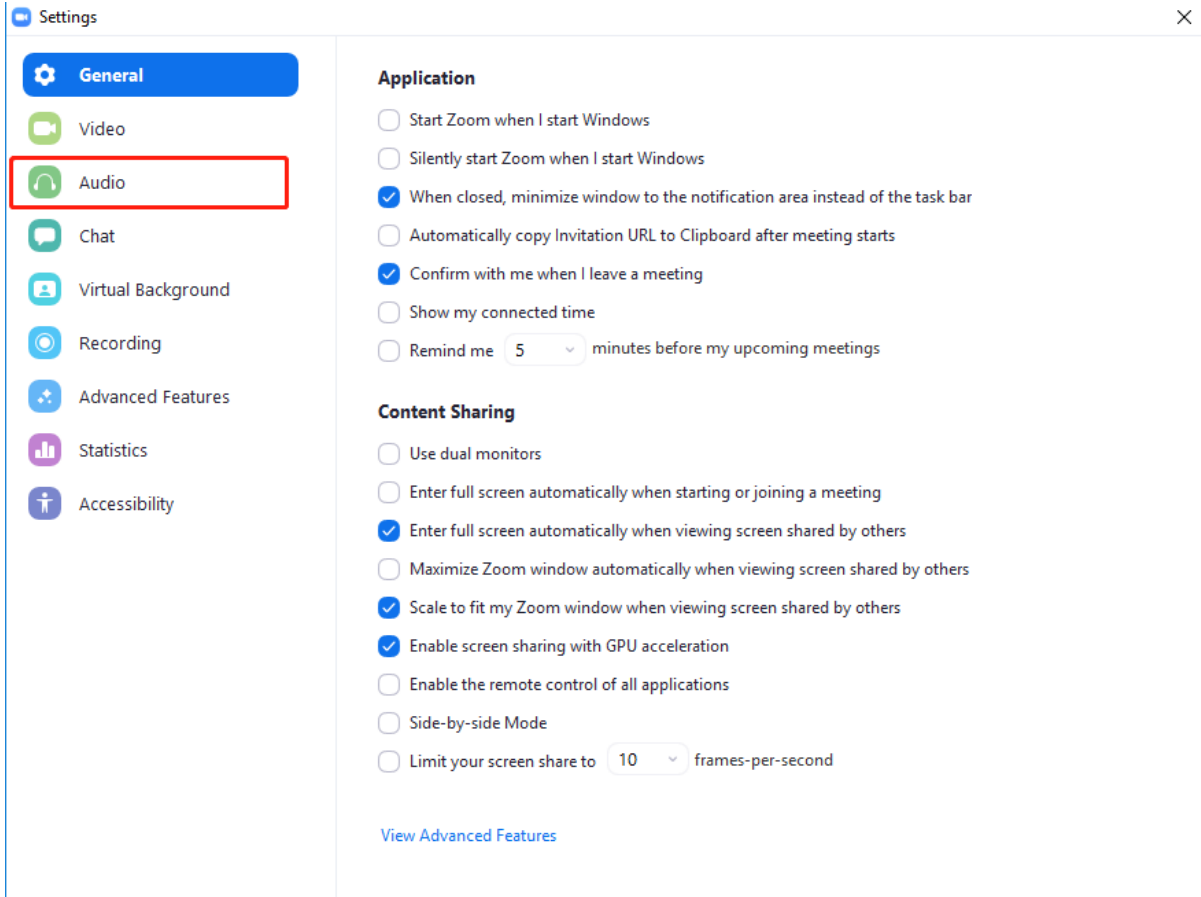


2、 Zoom Audio Settings

Step1. Click the settings icon;

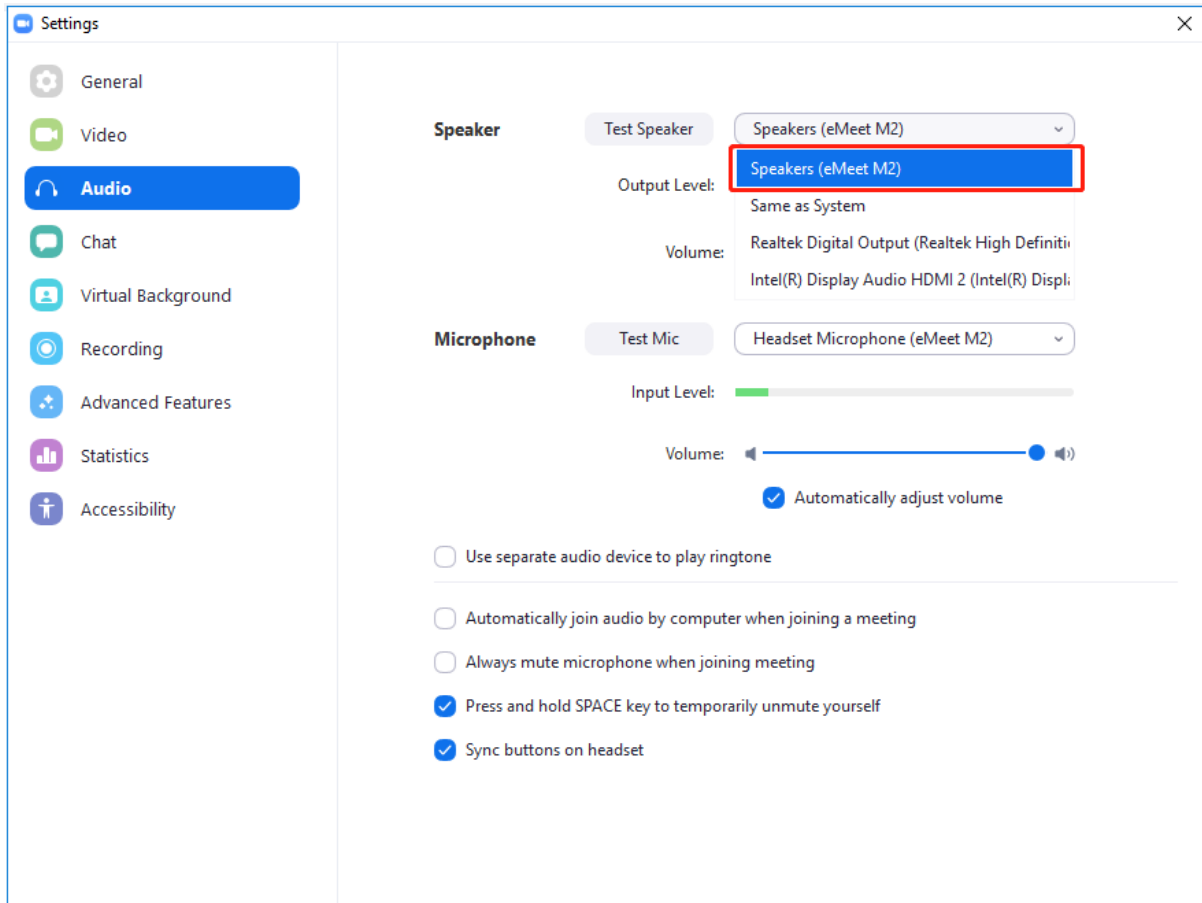


Step2: Select the "Audio" setting;

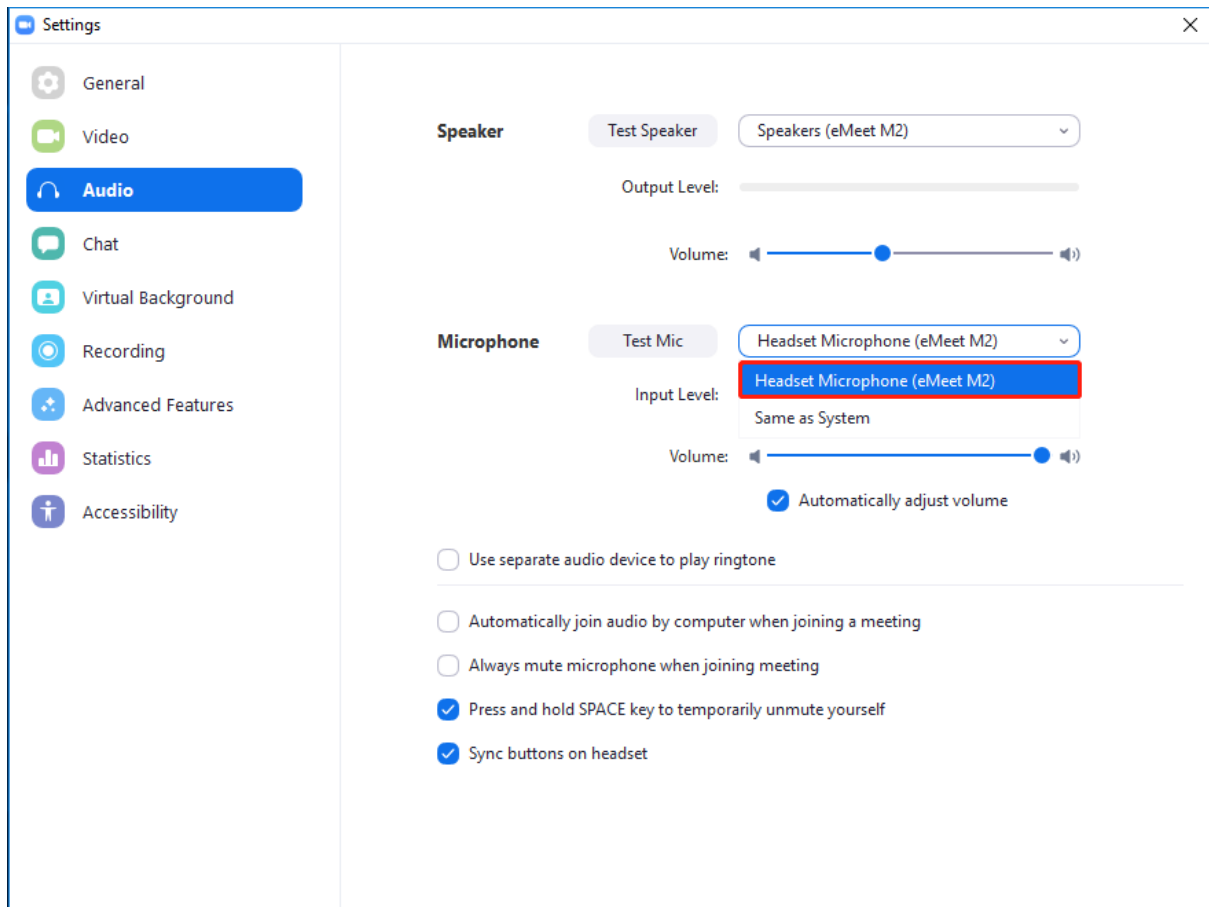


The screenshot shows the Zoom Settings application window. The left sidebar contains a list of settings categories: General, Video, Audio, Chat, Virtual Background, Recording, Advanced Features, Statistics, and Accessibility. The 'Audio' category is highlighted with a red rectangular border. The main content area is titled 'Settings' and is divided into two sections: 'Application' and 'Content Sharing'. Under 'Application', there are several options: 'Start Zoom when I start Windows' (unchecked), 'Silently start Zoom when I start Windows' (unchecked), 'When closed, minimize window to the notification area instead of the task bar' (checked), 'Automatically copy Invitation URL to Clipboard after meeting starts' (unchecked), 'Confirm with me when I leave a meeting' (checked), 'Show my connected time' (unchecked), and 'Remind me 5 minutes before my upcoming meetings' (unchecked). Under 'Content Sharing', there are several options: 'Use dual monitors' (unchecked), 'Enter full screen automatically when starting or joining a meeting' (unchecked), 'Enter full screen automatically when viewing screen shared by others' (checked), 'Maximize Zoom window automatically when viewing screen shared by others' (unchecked), 'Scale to fit my Zoom window when viewing screen shared by others' (checked), 'Enable screen sharing with GPU acceleration' (checked), 'Enable the remote control of all applications' (unchecked), 'Side-by-side Mode' (unchecked), and 'Limit your screen share to 10 frames-per-second' (unchecked). A 'View Advanced Features' link is located at the bottom of the settings area.

Step3: Select the Speaker of the "eMeet M2" device;



Step4: Select the Microphone of the "eMeet M2" device;

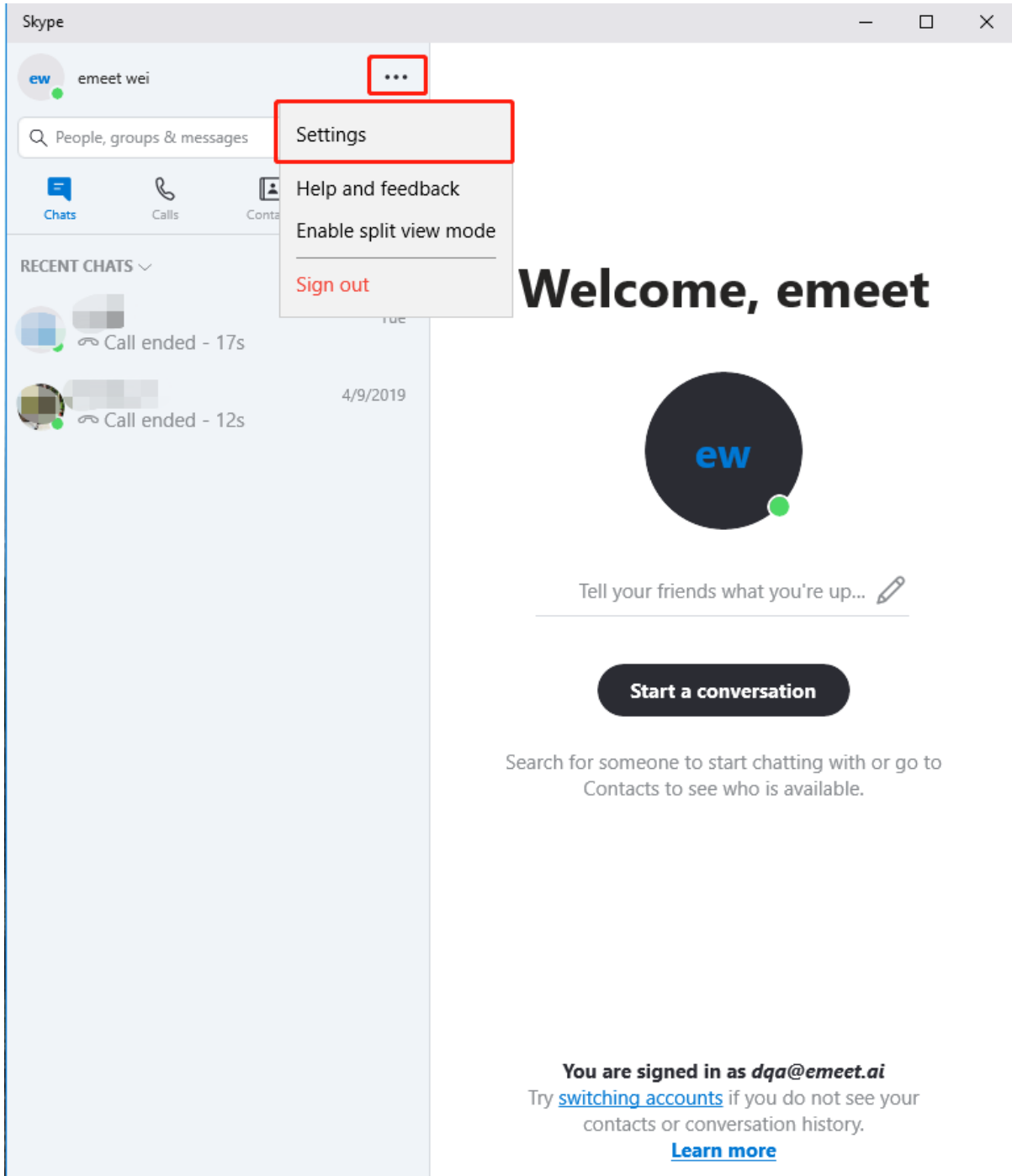


The screenshot shows the eMeet Settings window with the Audio tab selected. The Microphone section is expanded, showing a dropdown menu with 'Headset Microphone (eMeet M2)' selected and highlighted with a red box. The Speaker section shows 'Speakers (eMeet M2)' selected. The Input Level is set to 'Same as System'. The Volume slider is at approximately 75%. The 'Automatically adjust volume' checkbox is checked. The following options are listed:

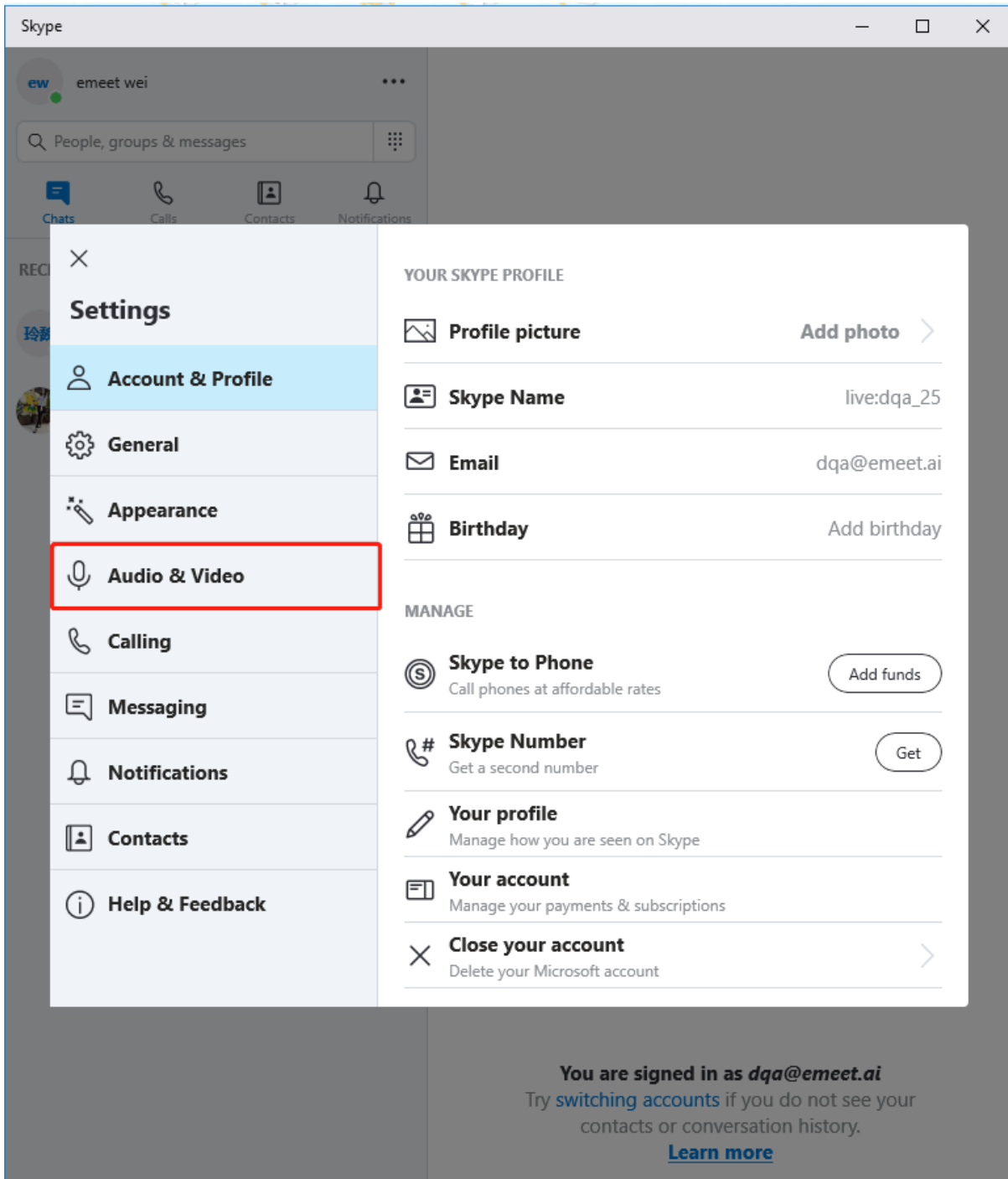
- Use separate audio device to play ringtone
- Automatically join audio by computer when joining a meeting
- Always mute microphone when joining meeting
- Press and hold SPACE key to temporarily unmute yourself
- Sync buttons on headset

3、Skype Audio Settings

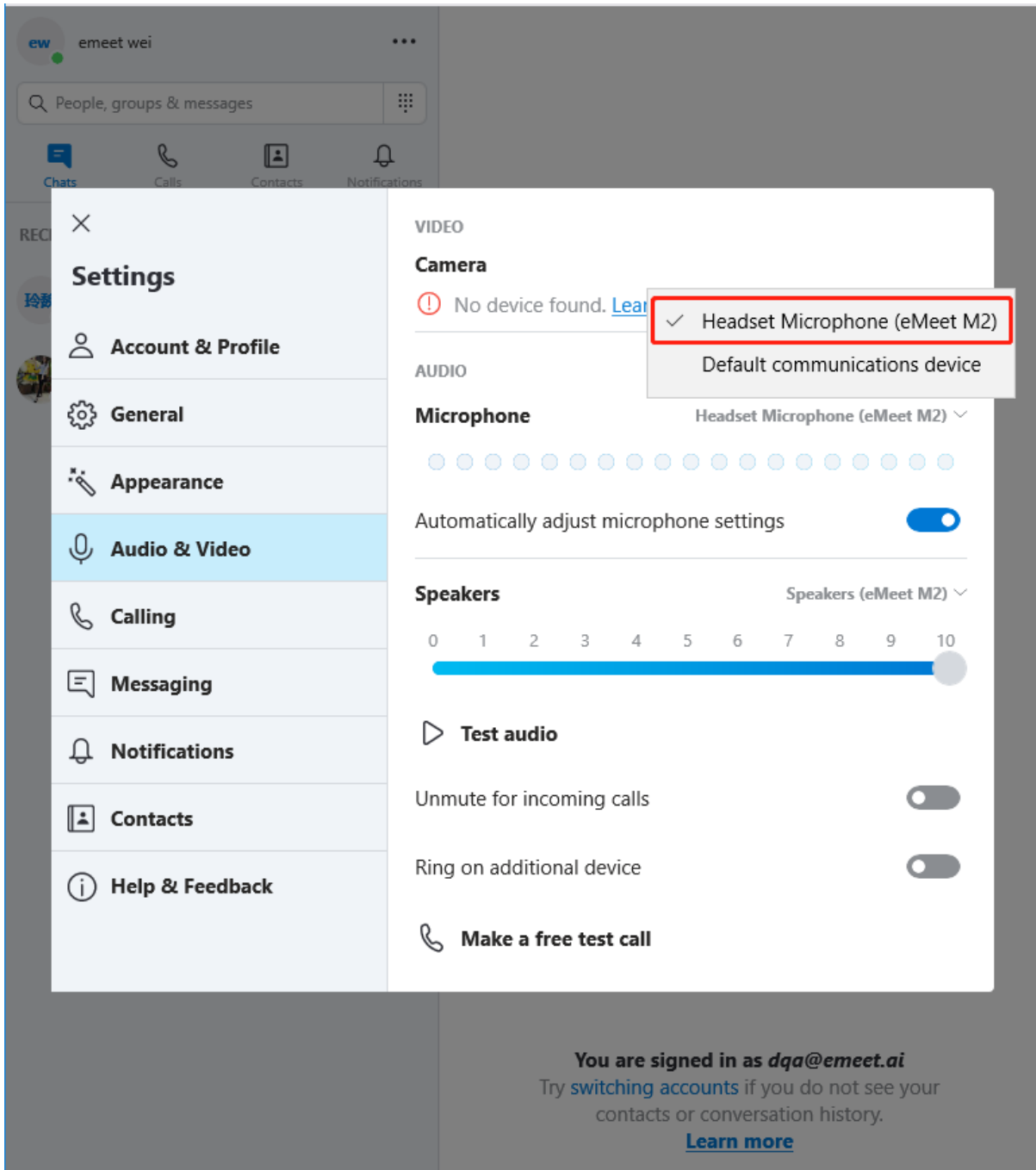
Step 1: Click on the icon  , select the "Settings" option ;



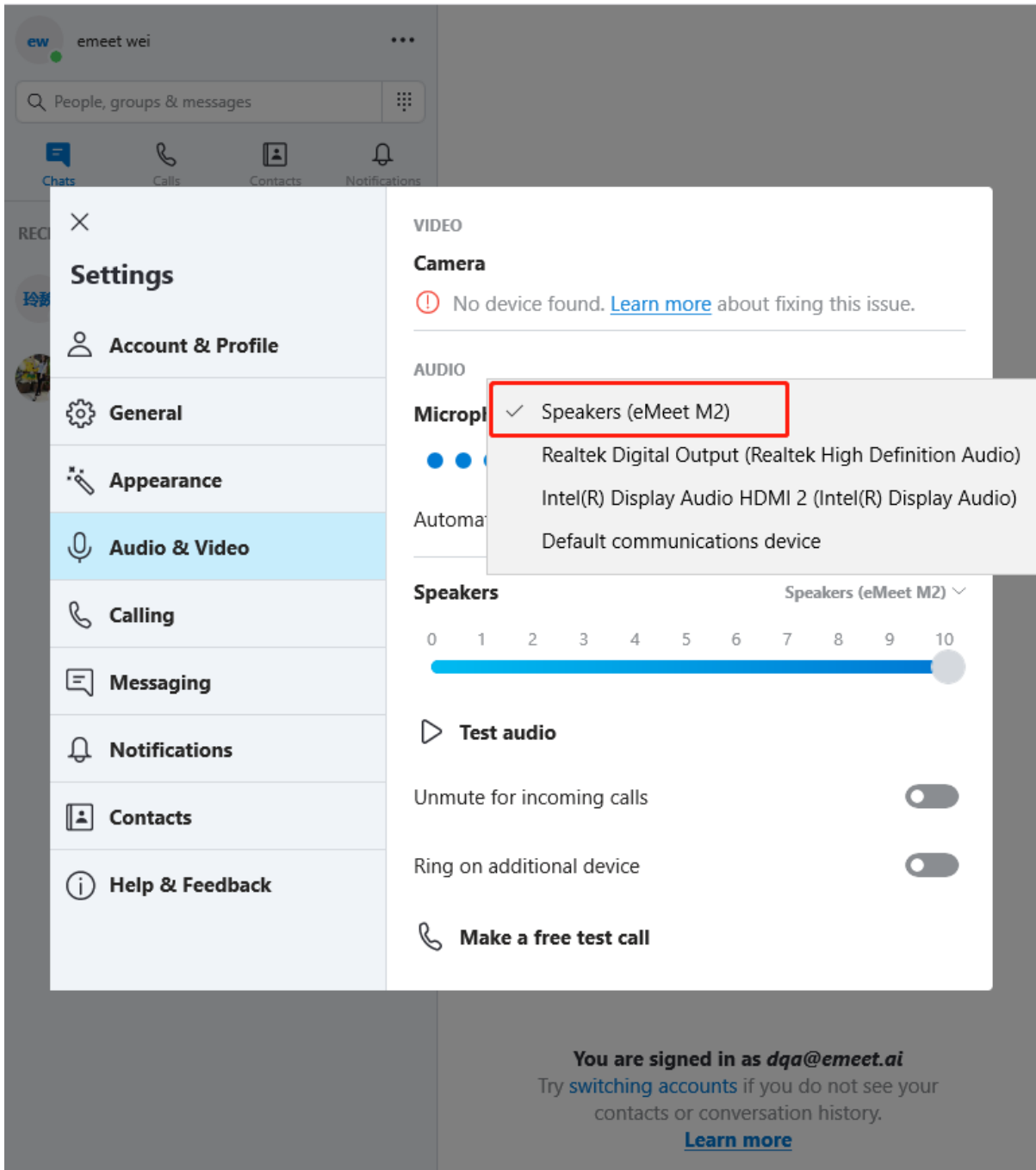
Step 2: Select the "Audio&Video" option;



Step 3: Set the microphone option to "eMeet M2";

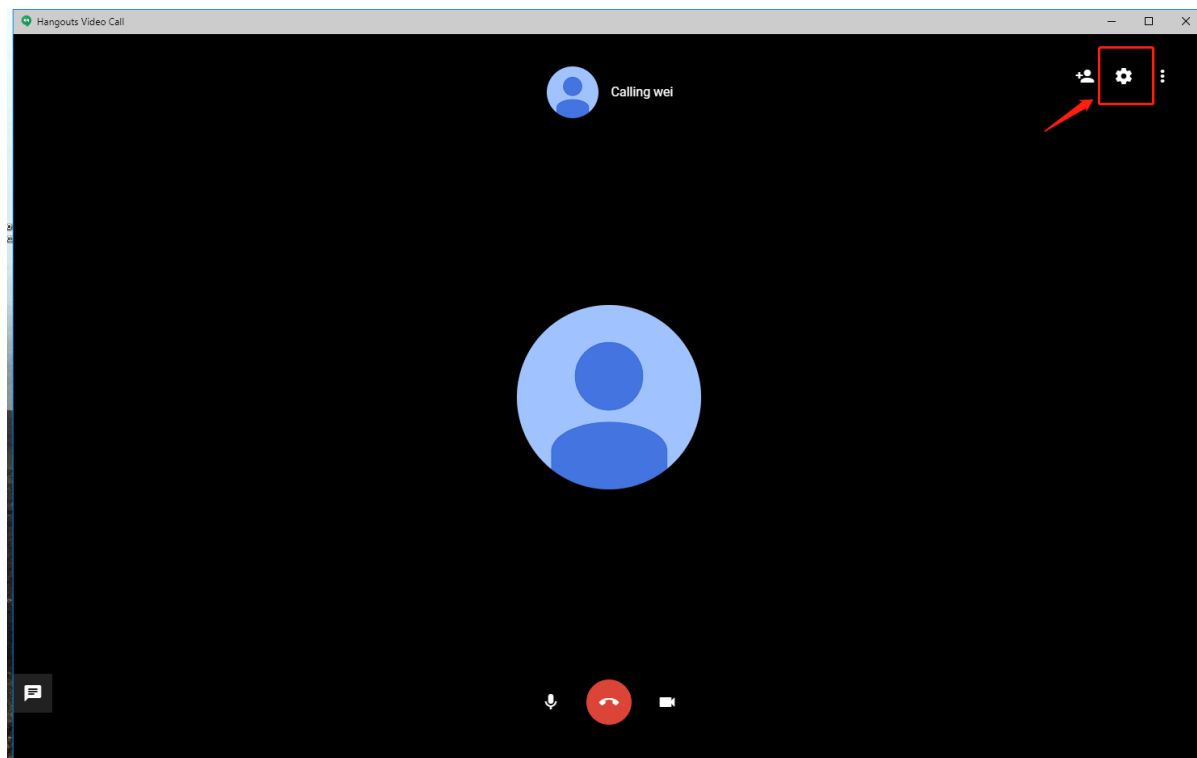


Step 4: Set the speaker option to “eMeet M2”;

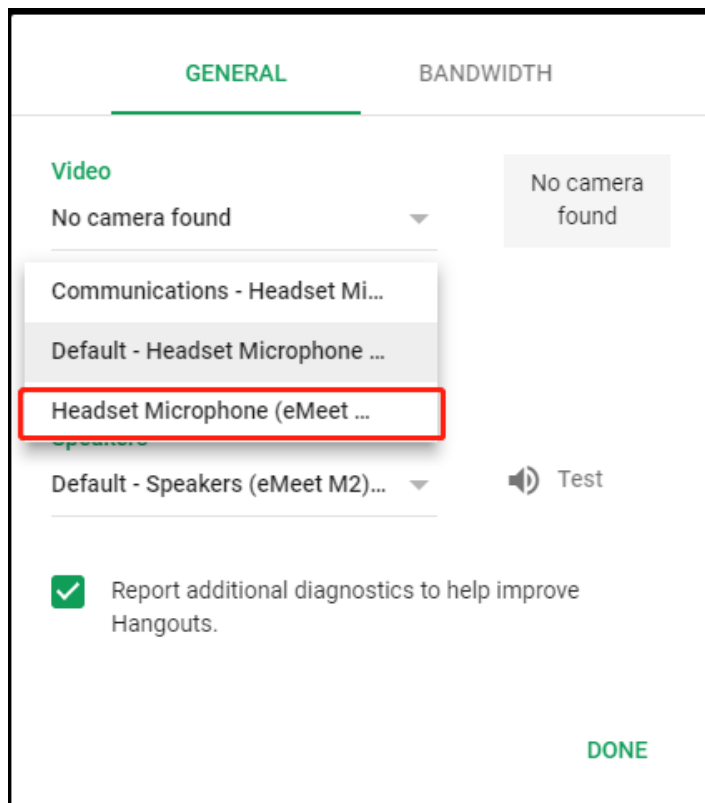
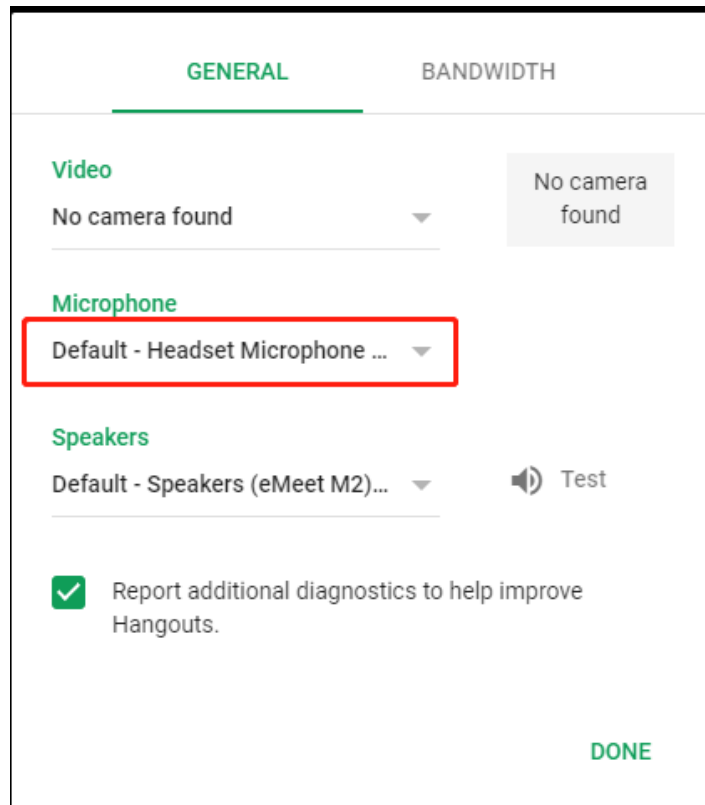


4、 Google Hangouts Audio Settings

Step 1: Click the settings icon;



Step 2: Select the microphone option and set the microphone to “eMeet M2”;



Step 3: Select the speaker option, then set the speaker to “eMeet M2” and click on “DONE”;

