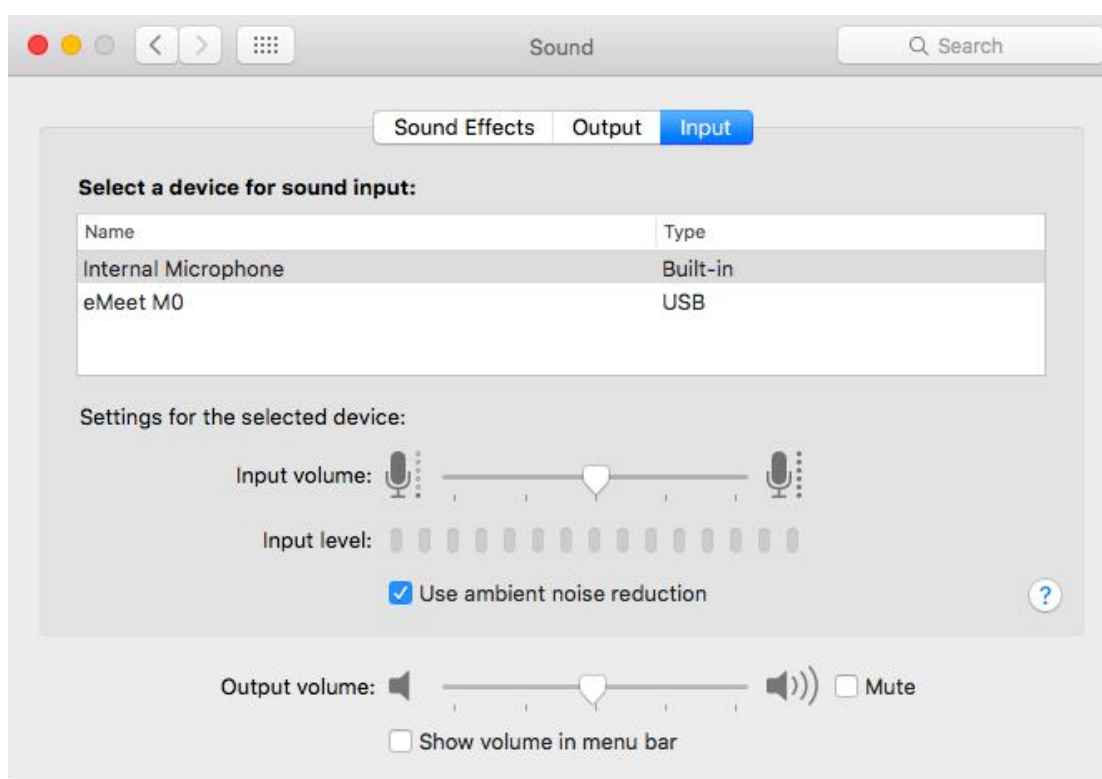


M0 Speaker and microphone Settings-EN

For Mac OS Users

Setting Default Microphone (Mac OS)

- Select **System Preferences > Sound**.
- Under the **Sound** tab, click **Input**, and then select **eMeet M0**.
- If necessary, adjust input volume at **Settings for the selected device** on the same panel.



Set Default Speaker (Mac OS)

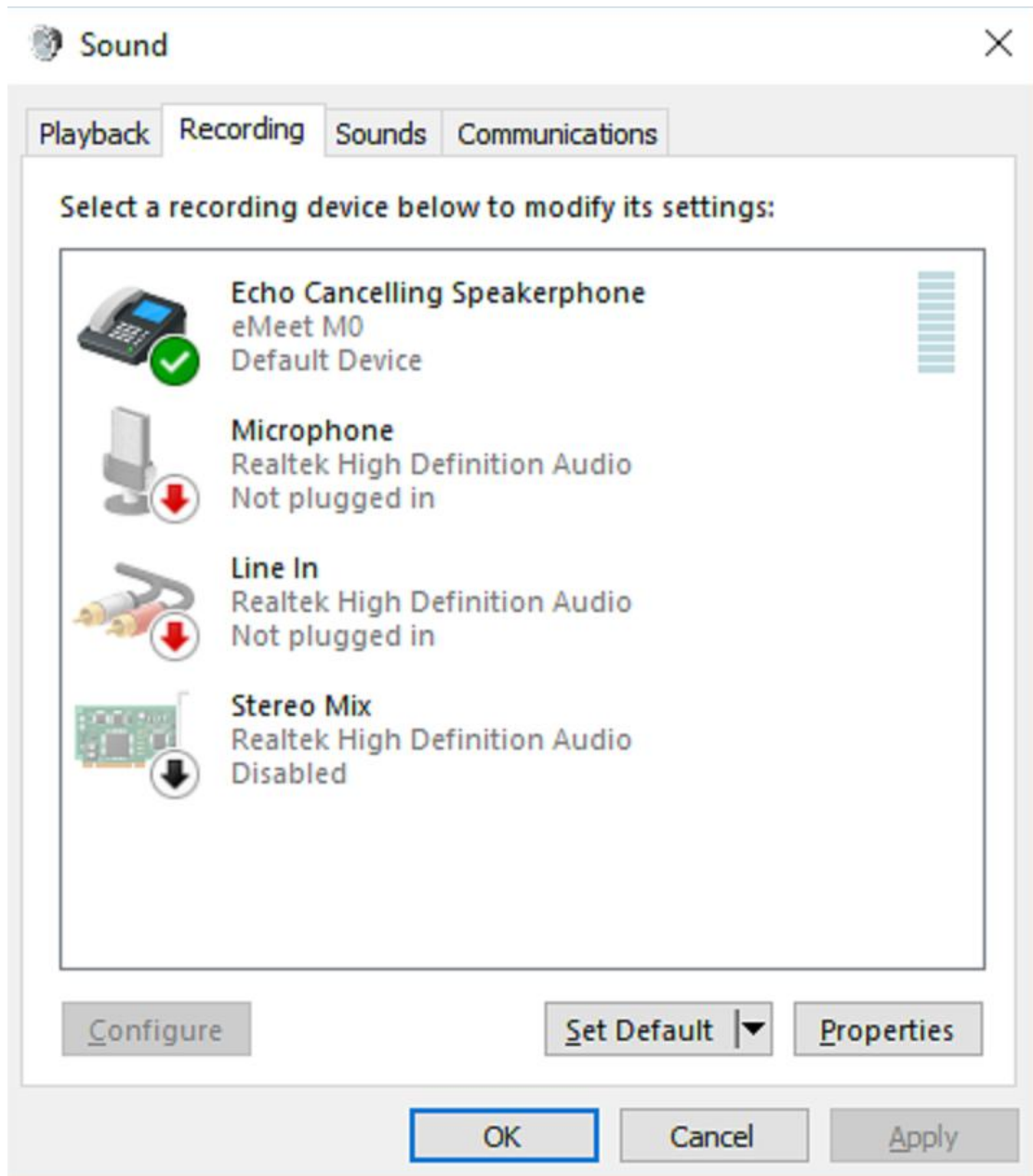
- Select **System Preferences > Sound**.
- Under the **Sound** tab, click **Output**, and then select **eMeet M0**.
- If necessary, adjust output volume at **Settings for the selected device** on the same panel.



For Windows Users

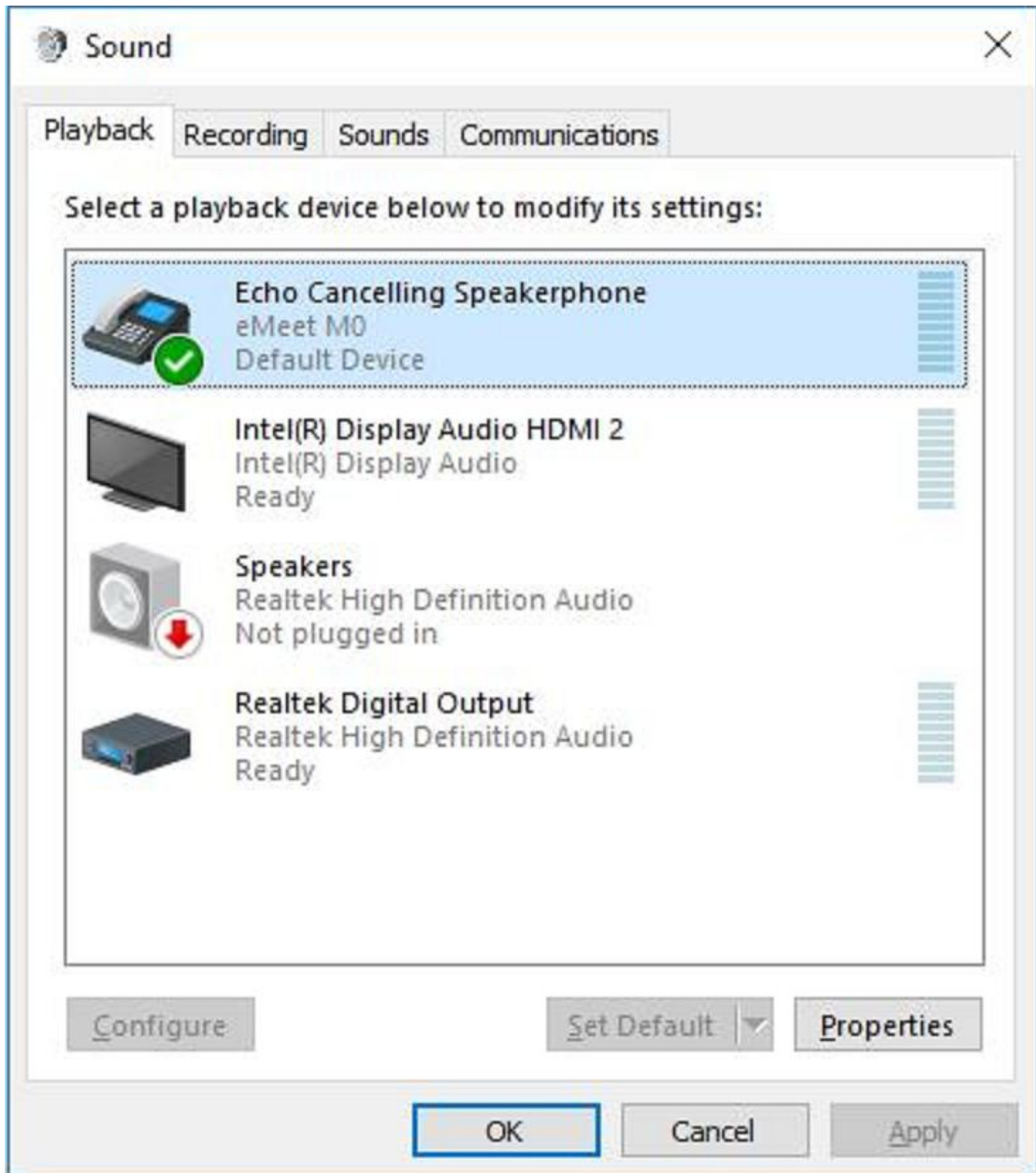
Set Default Microphone (Windows Vista/7/8/8.1/10)

- Select **Start > Control Panel > Hardware and Sound**.
- Under the **Sound** tab, click **Manage Audio Devices**. Click the **Record** tab on the top of the displayed setup window.
- Under the **Record** tab, select **eMeet M0**, and then click the **Set Default** button. Click **OK** to save your changes.
- If necessary, you can make changes to the property (level) of the same panel to adjust input volume.



Set Default Speaker (Windows Vista/7/8/8.1/10)

- Select **Start > Control Panel > Hardware and Sound**.
- Under the **Sound** tab, click **Manage Audio Devices**. Click the **Playback** tab on the top of the displayed setup window.
- Under the **Playback** tab, select **eMeet M0**, and then click the **Set as Default** button. Click **OK** to save your changes.
- If necessary, you can make changes to the property (level) of the same panel to adjust output volume.

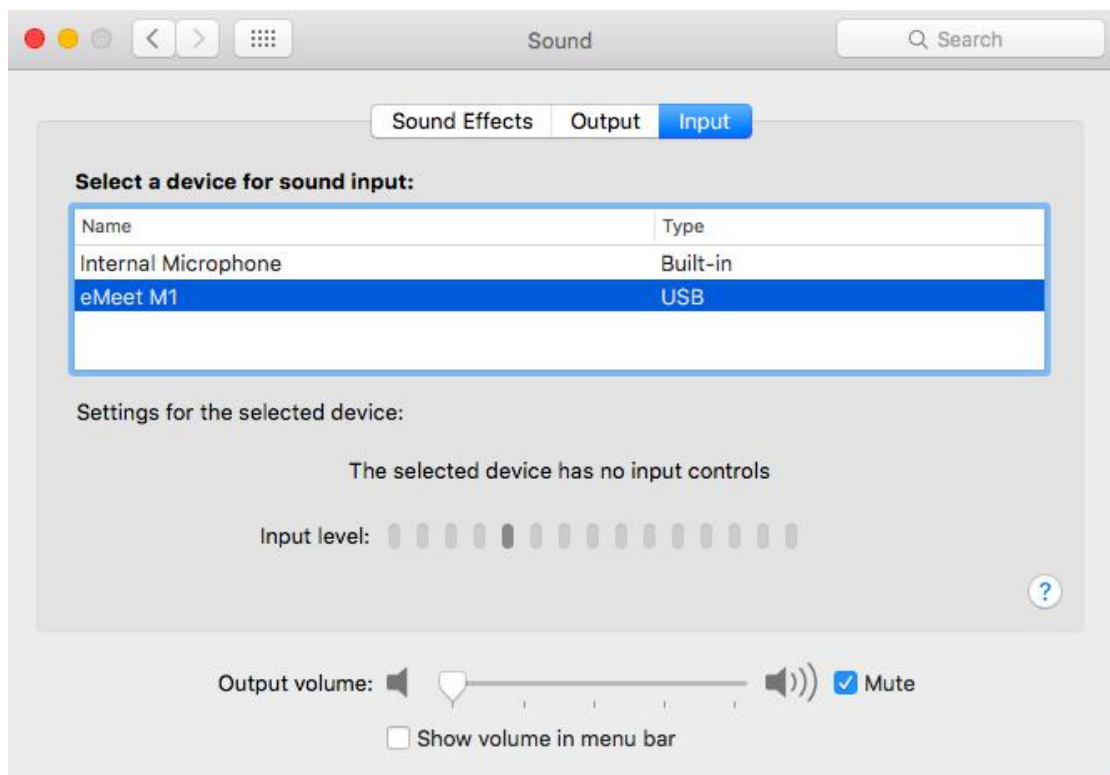


M1 Speaker and microphone Settings-EN

For Mac OS Users

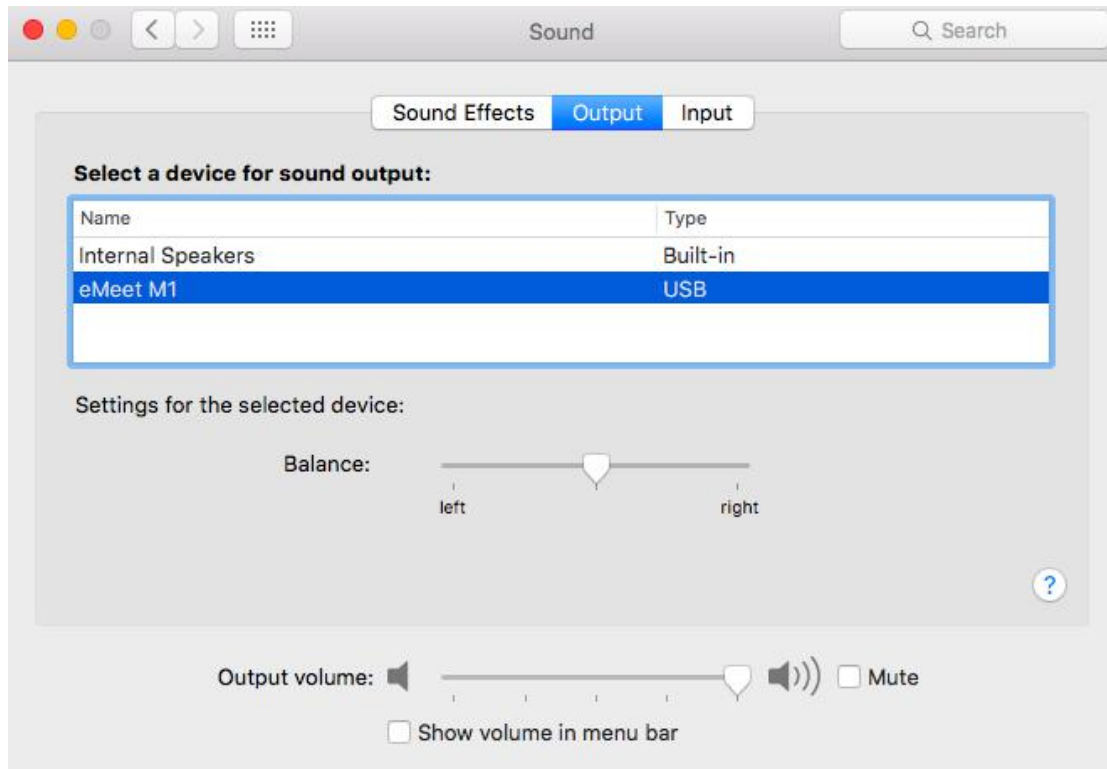
Setting Default Microphone (Mac OS)

- Select **System Preferences > Sound**.
- Under the **Sound** tab, click **Input**, and then select **eMeet M1**.
- If necessary, adjust input volume at **Settings for the selected device** on the same panel.



Set Default Speaker (Mac OS)

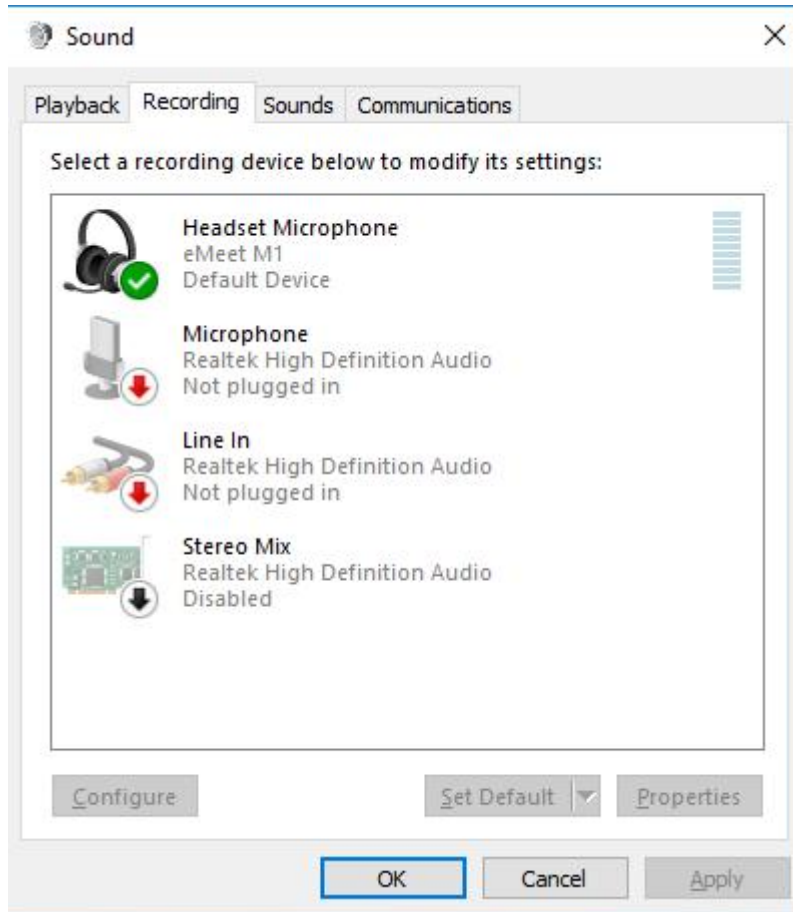
- Select **System Preferences > Sound**.
- Under the **Sound** tab, click **Output**, and then select **eMeet M1**.
- If necessary, adjust output volume at **Settings for the selected device** on the same panel.



For Windows Users

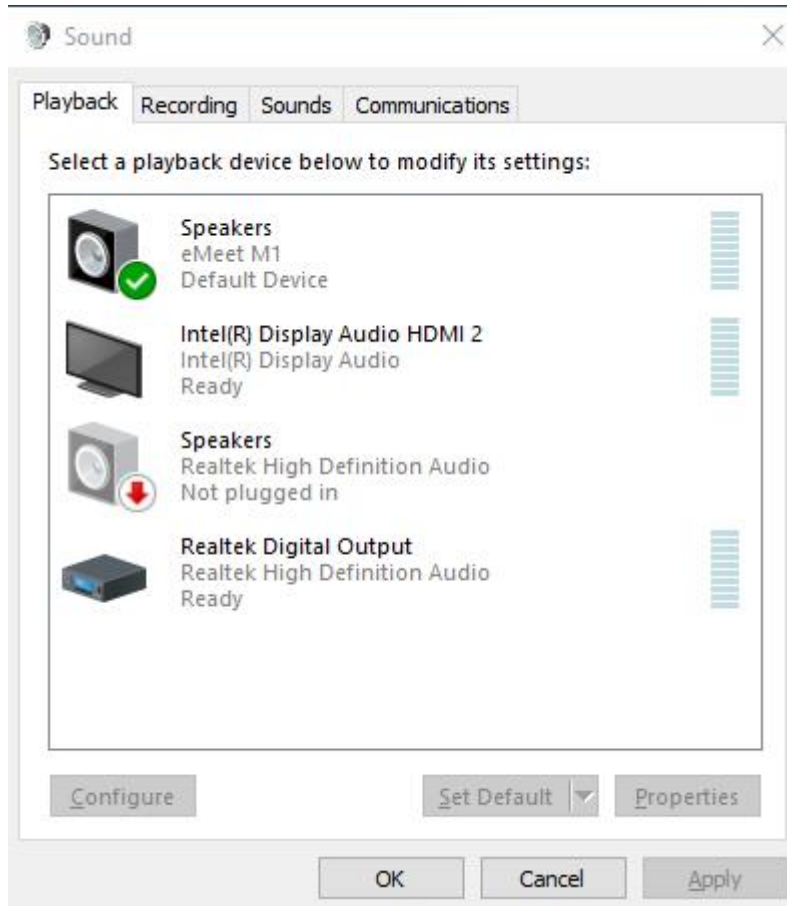
Set Default Microphone (Windows Vista/7/8/8.1/10)

- Select **Start > Control Panel > Hardware and Sound**.
- Under the **Sound** tab, click **Manage Audio Devices**. Click the **Record** tab on the top of the displayed setup window.
- Under the **Record** tab, select **eMeet M1**, and then click the **Set Default** button. Click **OK** to save your changes.
- If necessary, you can make changes to the property (level) of the same panel to adjust input volume.



Set Default Speaker (Windows Vista/7/8/8.1/10)

- Select **Start > Control Panel > Hardware and Sound**.
- Under the **Sound** tab, click **Manage Audio Devices**. Click the **Playback** tab on the top of the displayed setup window.
- Under the **Playback** tab, select **eMeet M1**, and then click the **Set as Default** button. Click **OK** to save your changes.
- If necessary, you can make changes to the property (level) of the same panel to adjust output volume.

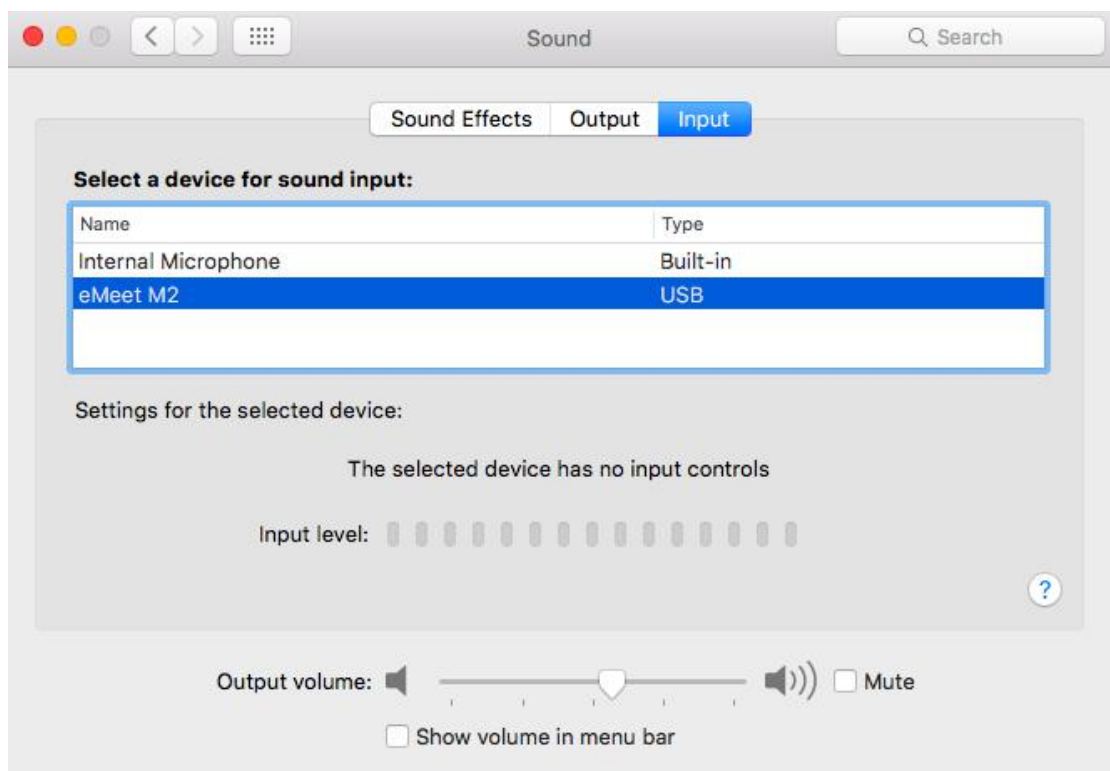


M2 Speaker and microphone Settings-EN

For Mac OS Users

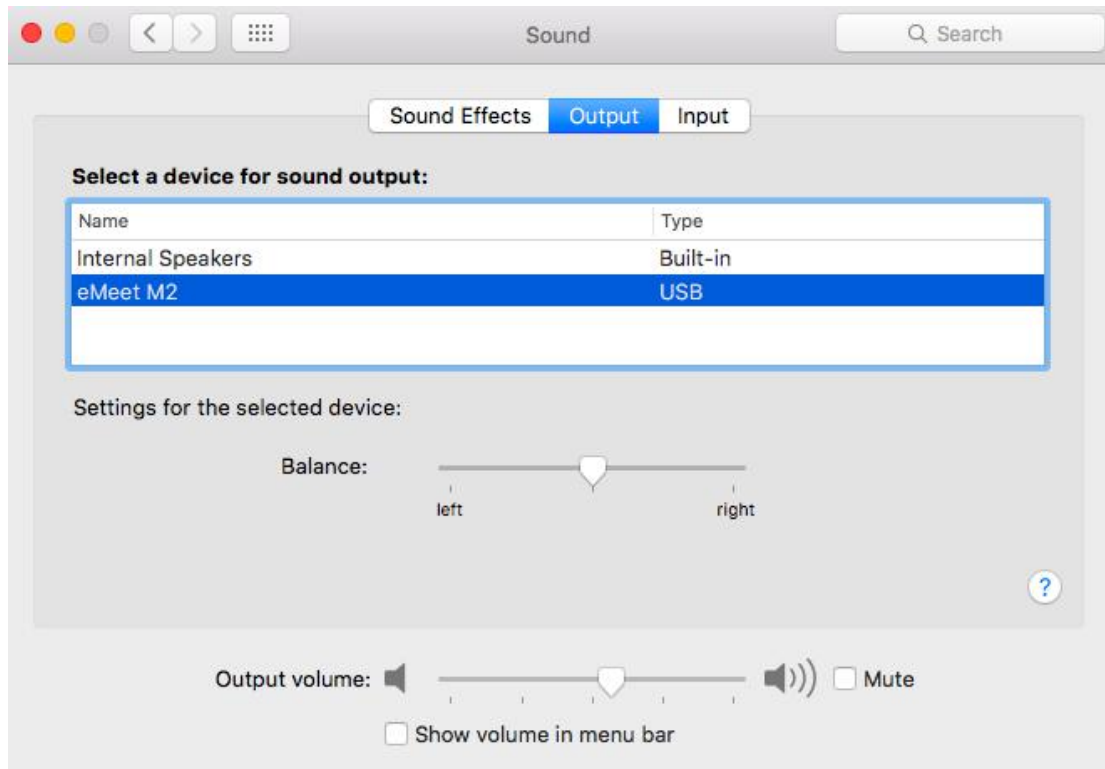
Setting Default Microphone (Mac OS)

- Select **System Preferences > Sound**.
- Under the **Sound** tab, click **Input**, and then select **eMeet M2**.
- If necessary, adjust input volume at **Settings for the selected device** on the same panel.



Set Default Speaker (Mac OS)

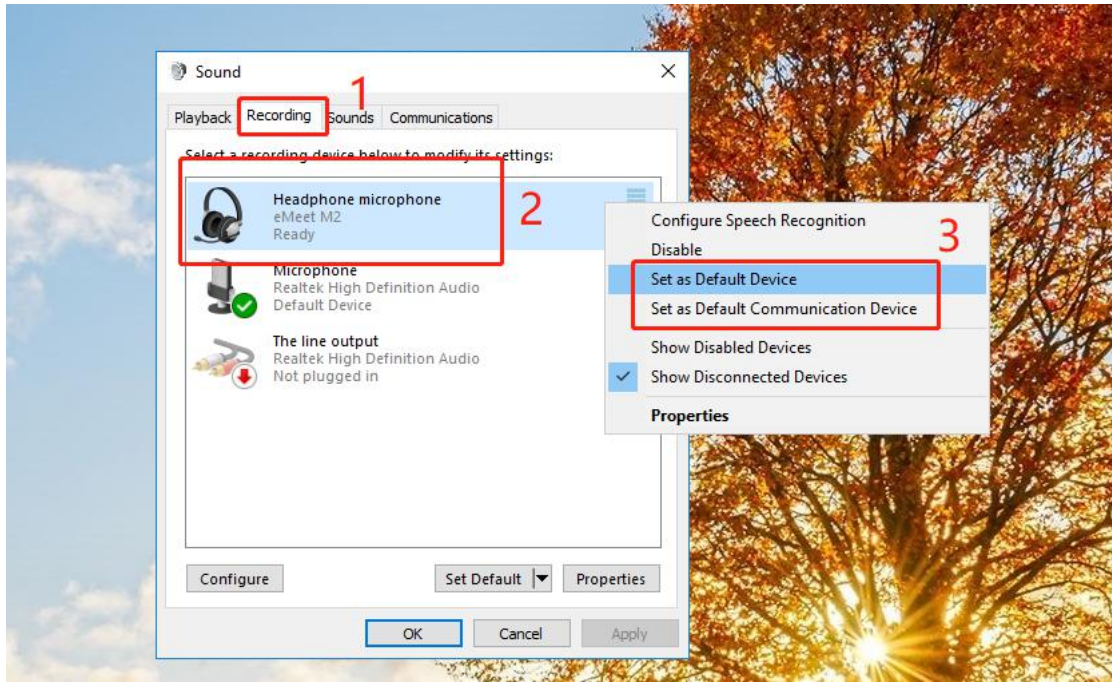
- Select **System Preferences > Sound**.
- Under the **Sound** tab, click **Output**, and then select **eMeet M2**.
- If necessary, adjust output volume at **Settings for the selected device** on the same panel.



For Windows Users

Set Default Microphone (Windows Vista/7/8/8.1/10)

- Select **Start > Control Panel > Hardware and Sound**.
- Under the **Sound** tab, click **Manage Audio Devices**. Click the **Recording** tab on the top of the displayed setup window.
- Under the **Recording** tab, select **eMeet M2**, and then click the **Set Default** button. Click **OK** to save your changes.
- If necessary, you can make changes to the property (level) of the same panel to adjust input volume.



Set Default Speaker (Windows Vista/7/8/8.1/10)

- Select **Start > Control Panel > Hardware and Sound**.
- Under the **Sound** tab, click **Manage Audio Devices**. Click the **Playback** tab on the top of the displayed setup window.
- Under the **Playback** tab, select **eMeet M2**, and then click the **Set as Default** button. Click **OK** to save your changes.
- If necessary, you can make changes to the property (level) of the same panel to adjust output volume.

